

# Estimation of Mars surface physical properties from hyperspectral images using the SIR method

*Caroline Bernard-Michel, Sylvain Douté, Laurent Gardes and Stéphane Girard*



# Outline

## I. Context

- Hyperspectral image data
- Inverse problem

## II. Dimension reduction

- PCA
- SIR

## III. Regularization and estimation

- Zhong et al., 2005
- Tikhonov

## IV. Validation on simulations

## V. Application to the south polar cap of Mars

## VI. Conclusion and future work

# Outline

## I. Context

- Hyperspectral image data
- Inverse problem

## II. Dimension reduction

- PCA
- SIR

## III. Regularization and estimation

- Zhong et al., 2005
- Tikhonov

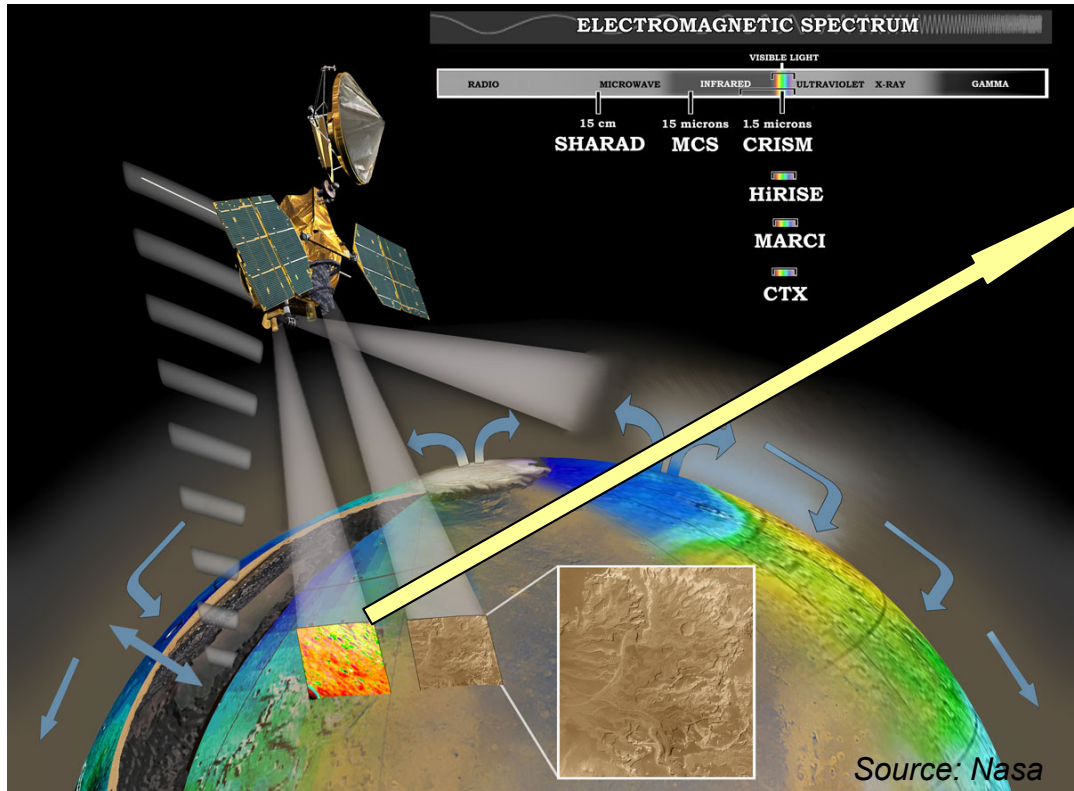
## IV. Validation on simulations

## V. Application to the south polar cap of Mars

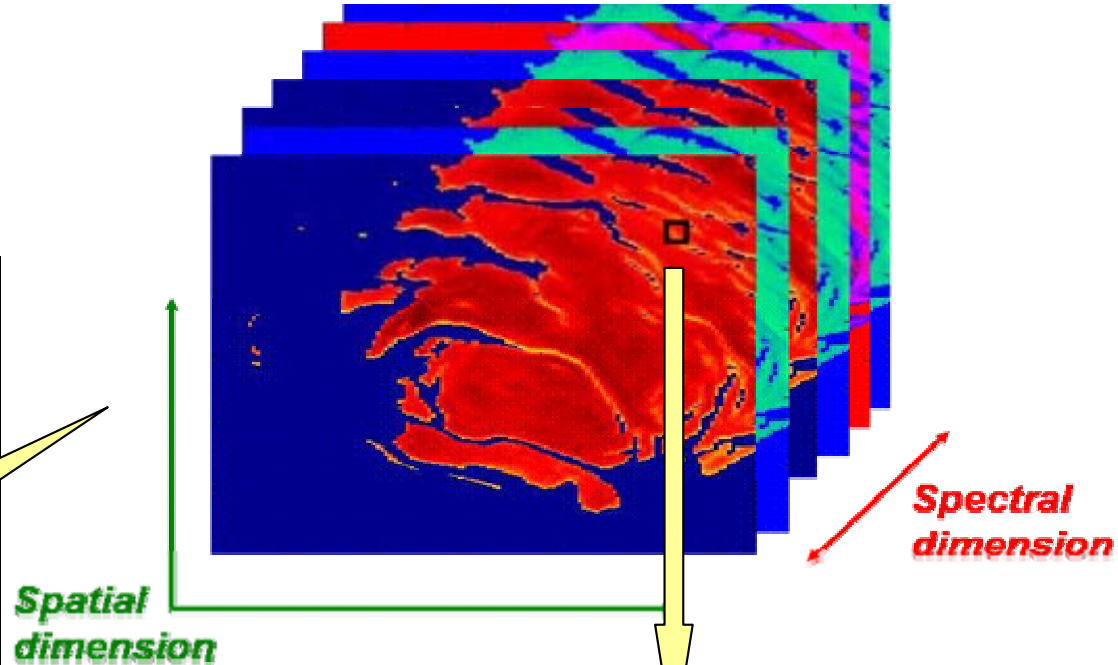
## VI. Conclusion and future work

# Introduction

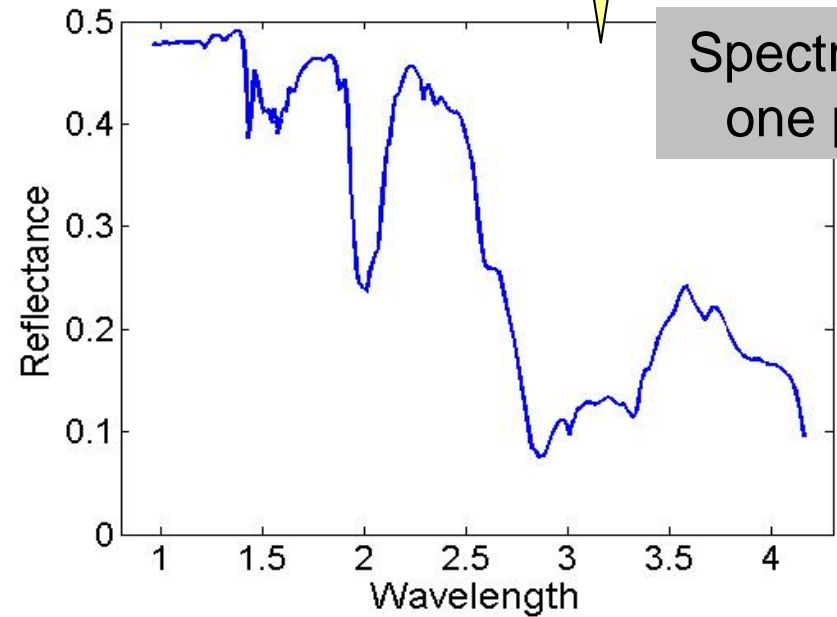
Spectrometer



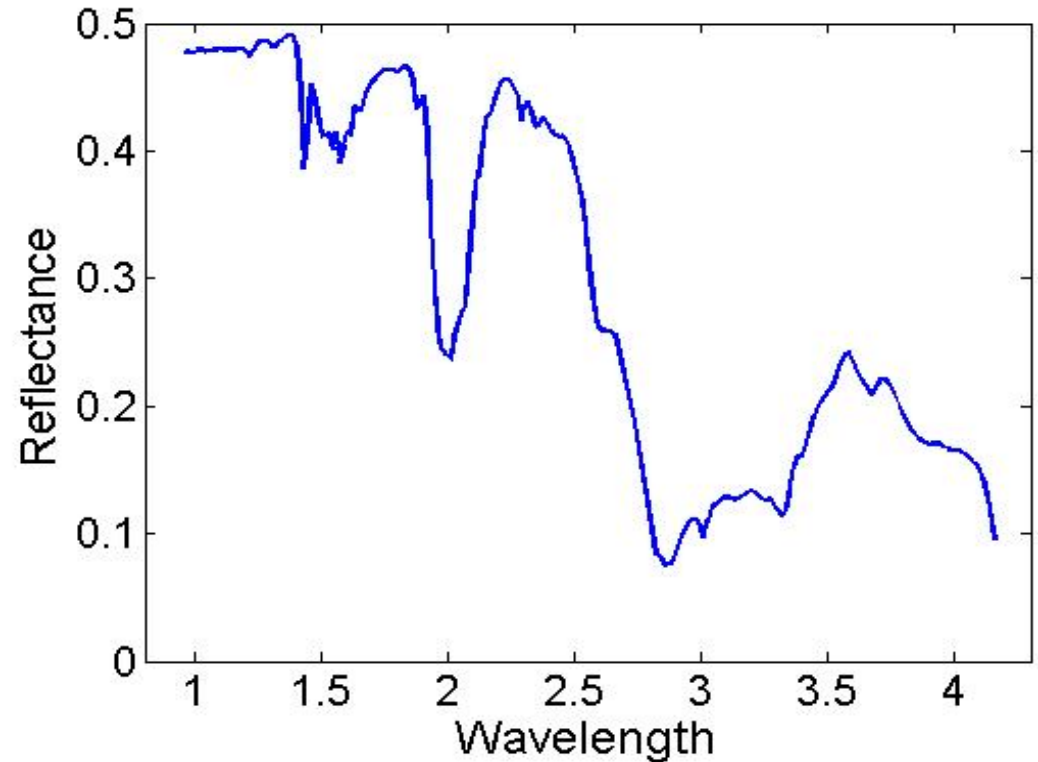
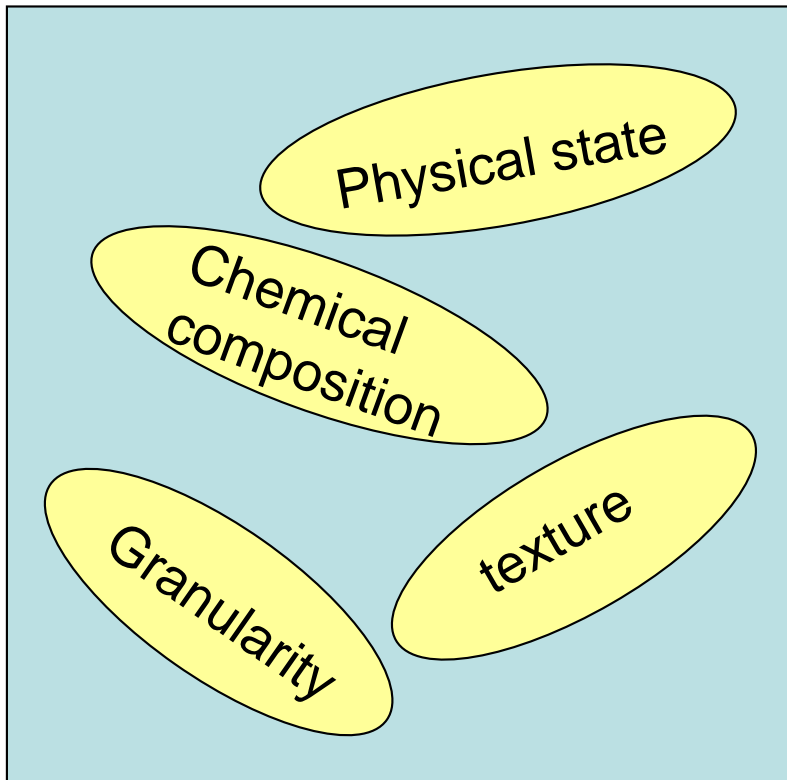
Hyperspectral cube



Spectrum at one pixel

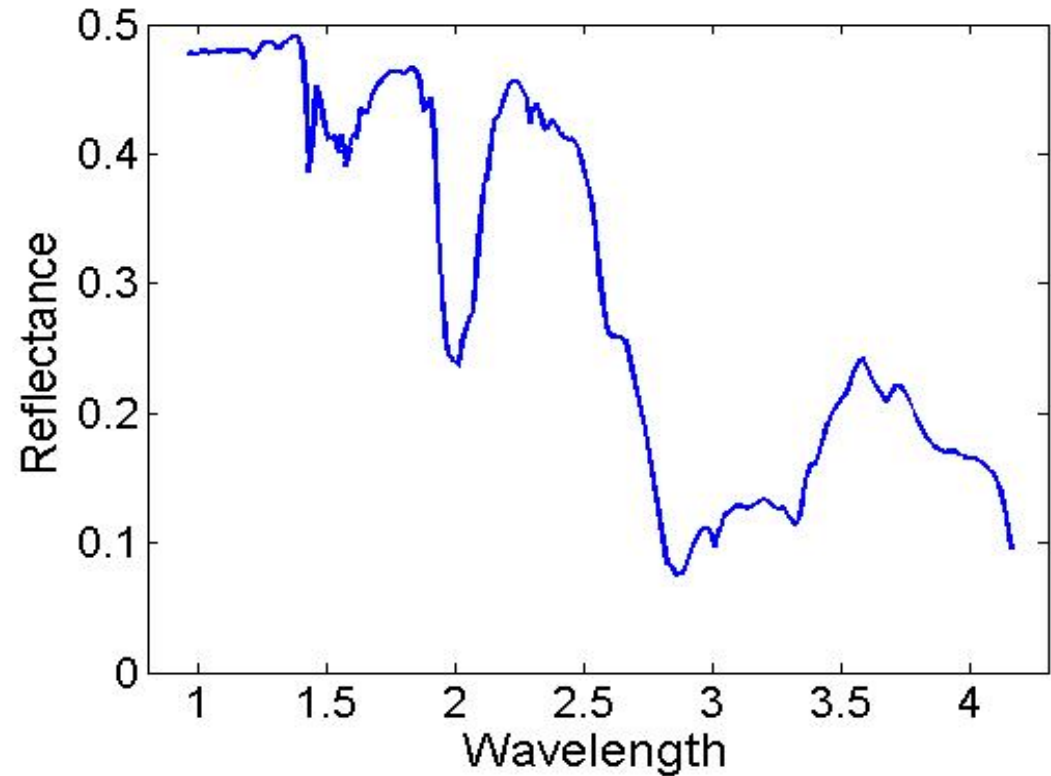
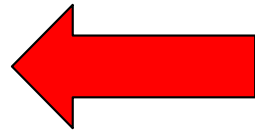
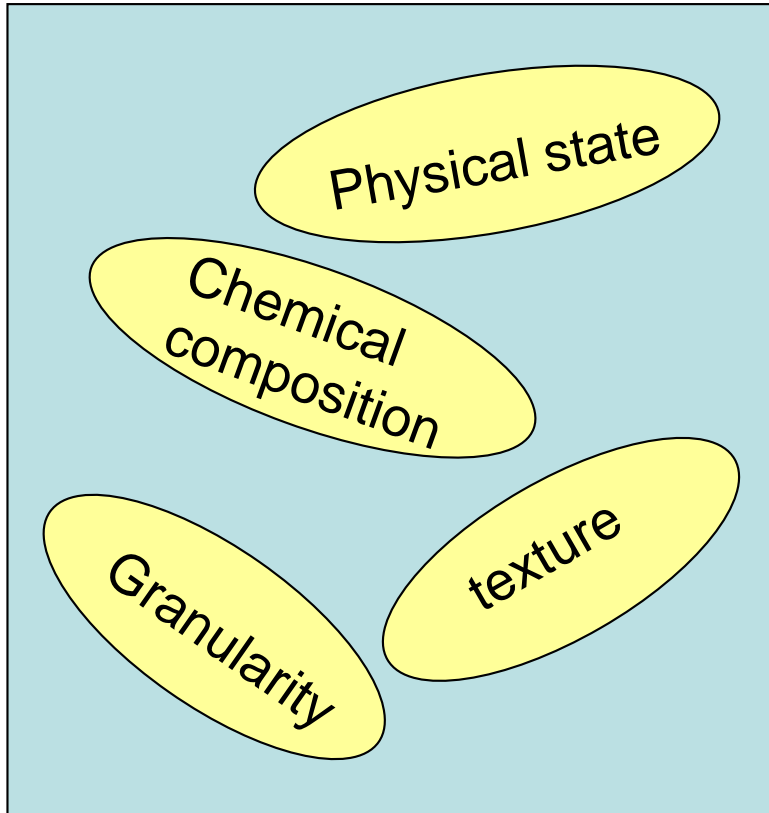


# Radiative transfer model



***RADIATIVE TRANSFER MODEL: evaluates direct link between parameters and spectra. Allows the construction of a training data***

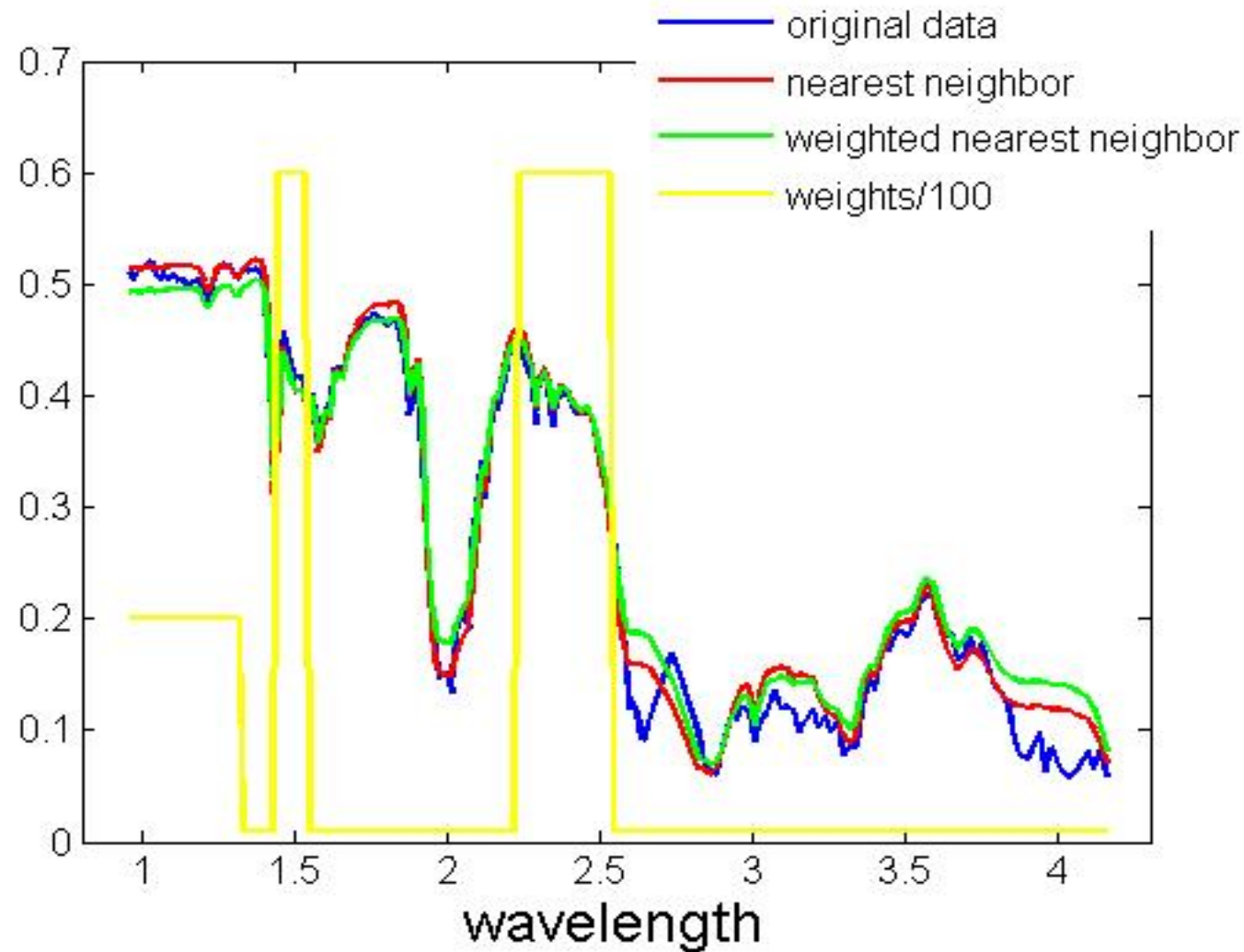
# Inverse problem



***INVERSE PROBLEM: evaluates the properties of atmospheric and surface materials from the spectra***

# Usual methods

- Nearest neighbor
- Weighted Nearest neighbor



# Aim

- To establish functional relationships between:
  - Spectra  $x \in \mathbb{R}^p$  ( $p=184$ ) from Mars Express mission
  - Physical parameter  $y \in \mathbb{R}$  : proportion of water, proportion of dust, grain size...
  - Construct  $f$  in order to estimate parameters:

$$f : \mathbb{R}^p \longrightarrow \mathbb{R}$$

$$x \longrightarrow y$$



# Difficulties

- Curse of dimensionality (184 wavelengths): dimension of  $x$  has to be reduced
- Find projection axis  $a \in \mathbb{R}^p$  (here, only the first axis will be retained)
- Instead of estimating  $f$  such as  $y = f(x)$ , we will suppose there exists  $g : \mathbb{R} \rightarrow \mathbb{R}$  exists such that:

$$y = g(\langle a, x \rangle, \varepsilon)$$

# Outline

## I. Context

- Hyperspectral image data
- Inverse problem

## II. Dimension reduction

- PCA
- SIR

## III. Regularization and estimation

- Zhong et al., 2005
- Tikhonov

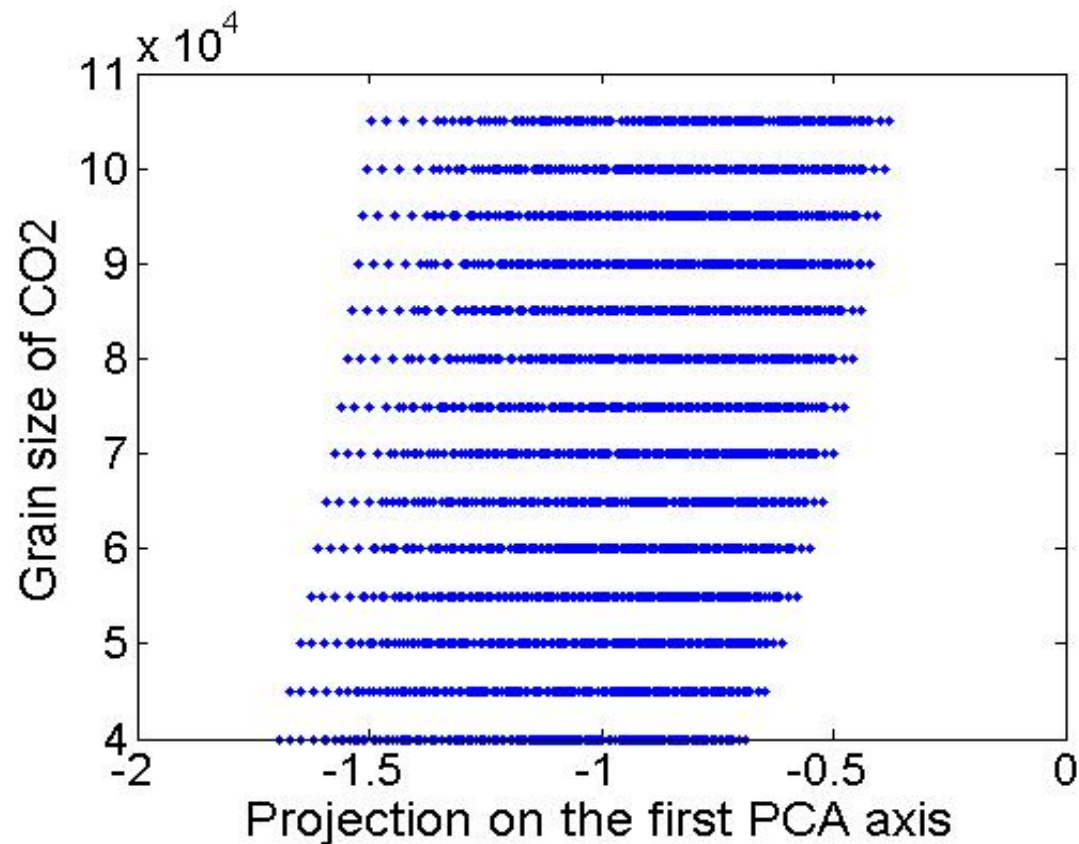
## IV. Validation on simulations

## V. Application to the south polar cap of Mars

## VI. Conclusion and future work

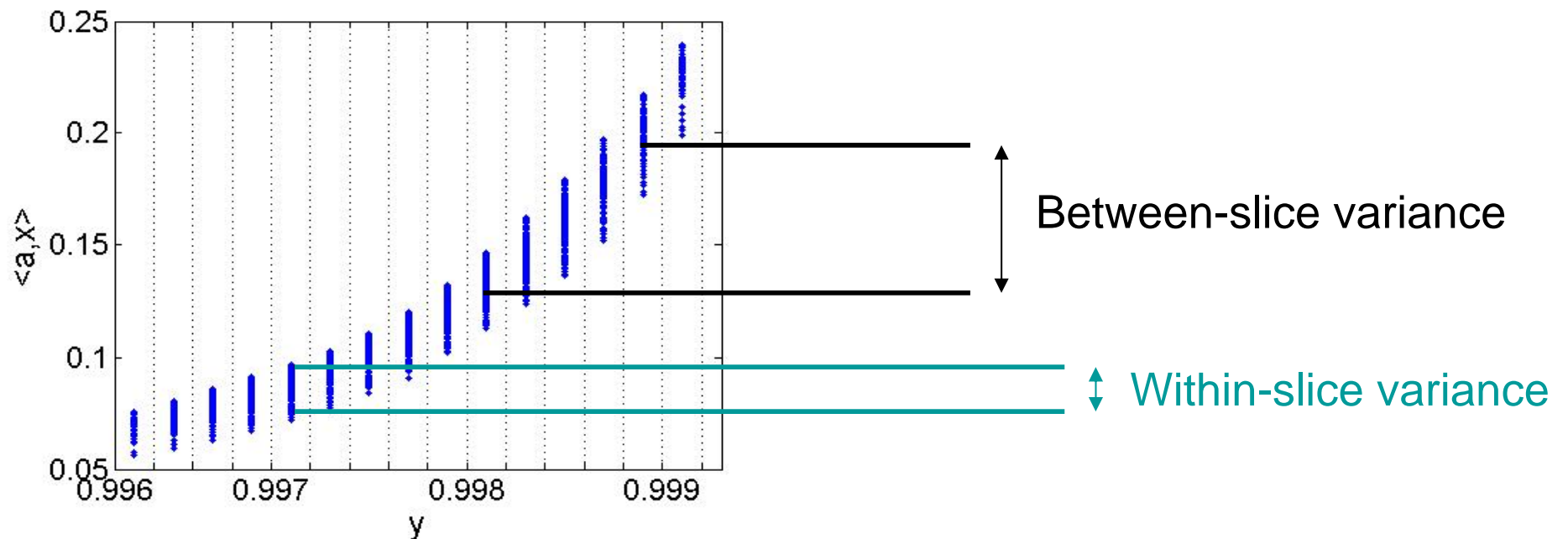
# Principal component analysis

- **Maximizes the variance** of the projections of the observations  $x$
- Does not take into account  $y$



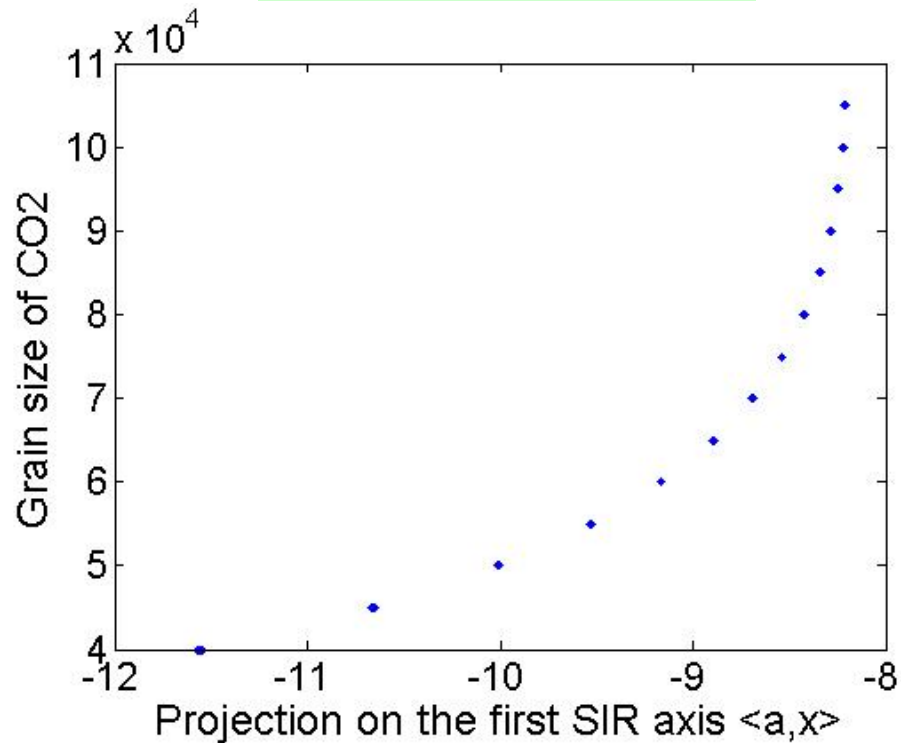
# Sliced inverse regression

- Proposed by Li (1991)
- Maximizes the between-slice variance of projections
- PCA of  $E(Z/Y)$  with  $Z = \Sigma^{-1/2} X$
- Eigenvectors of  $\Sigma^{-1} \Gamma$  with  $\Gamma = \text{var}(E(X / Y))$   
 $\Sigma = \text{var}(X)$

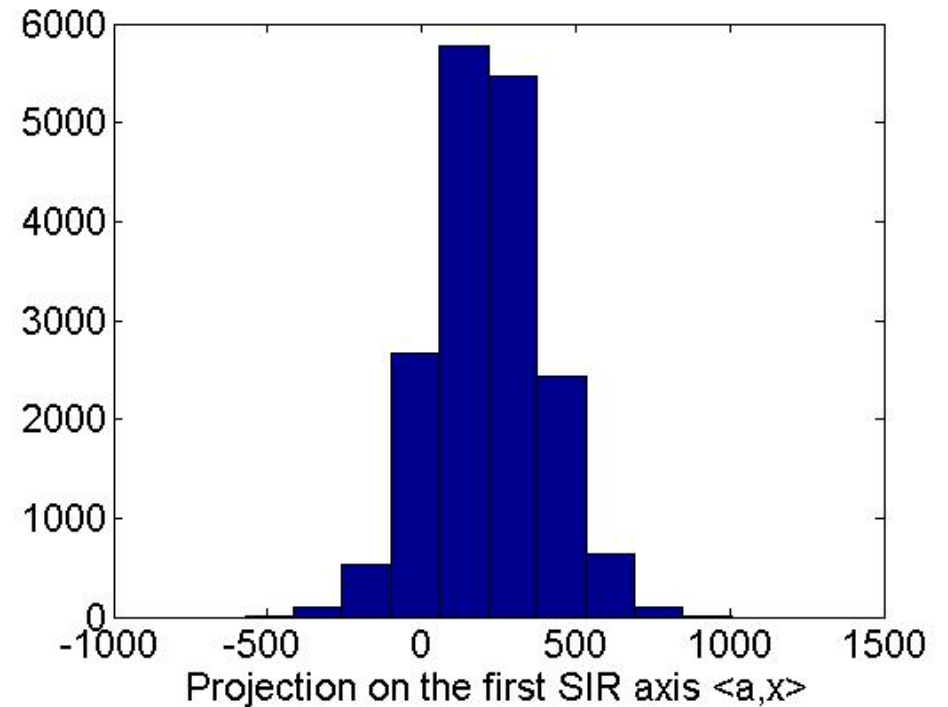


# Application of SIR

TRAINING DATA

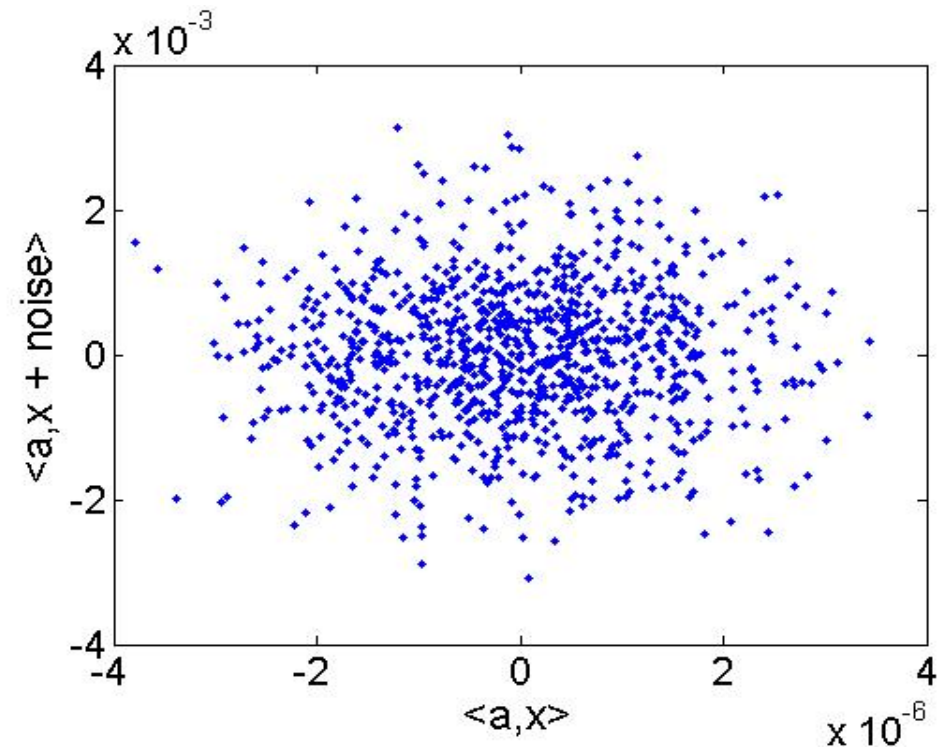
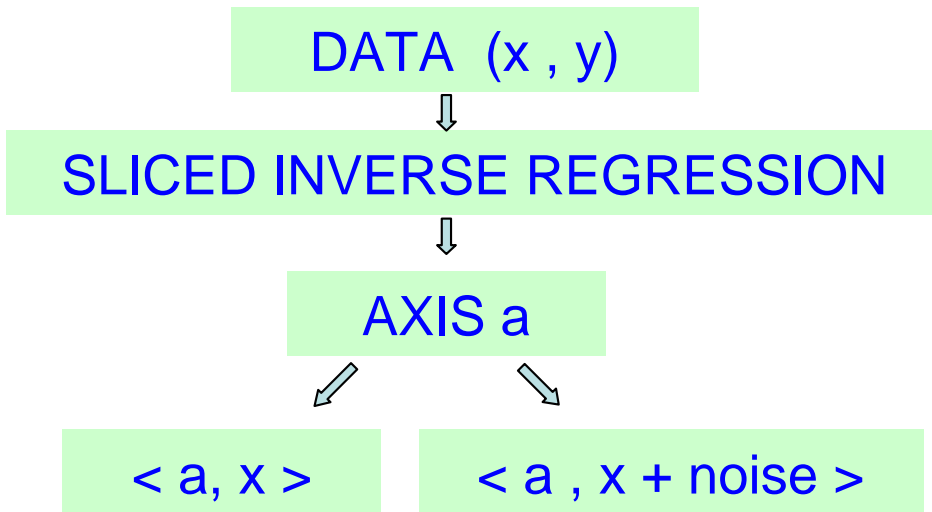


OBSERVED DATA



# Problem

- Covariance matrix is ill-conditioned
  - Bad estimations of the directions
  - Sensitivity to noise
- Can be solved using regularization



# Outline

## I. Context

- Hyperspectral image data
- Inverse problem

## II. Dimension reduction

- PCA
- SIR

## III. Regularization and estimation

- Zhong et al., 2005
- Tikhonov

## IV. Validation on simulations

## V. Application to the south polar cap of Mars

## VI. Conclusion and future work

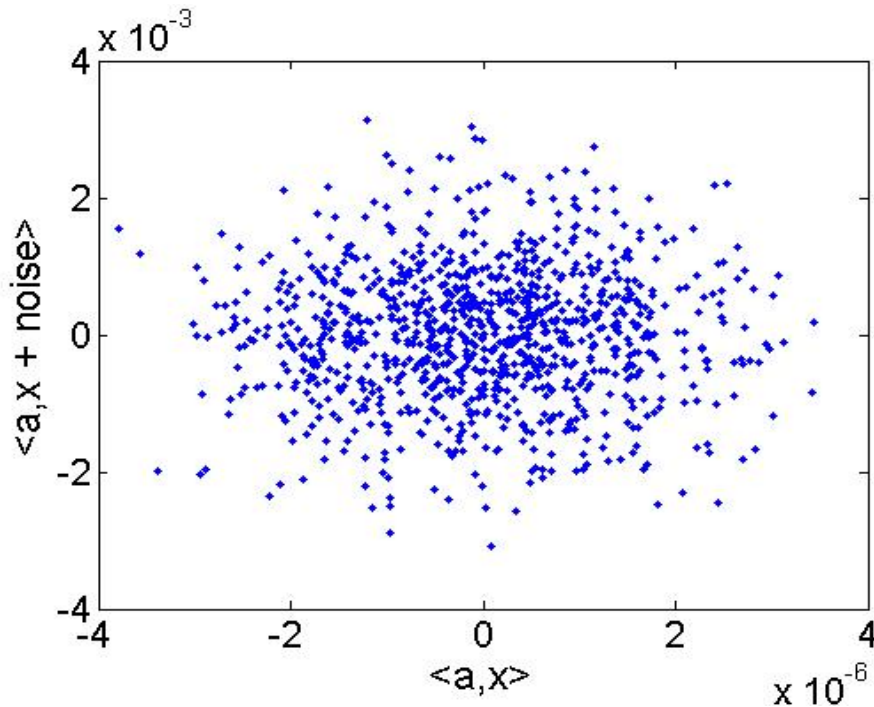
# Regularization (1)

- Usual SIR:
  - eigenvectors of  $\Sigma^{-1}\Gamma$
- Regularized SIR:
  - Zhong et al., 2005: eigenvectors of
$$(\Sigma + \lambda Id)^{-1} \Gamma$$
  - Tikhonov regularization: eigenvectors of
$$(\Sigma^2 + \lambda Id)^{-1} \Sigma \Gamma$$

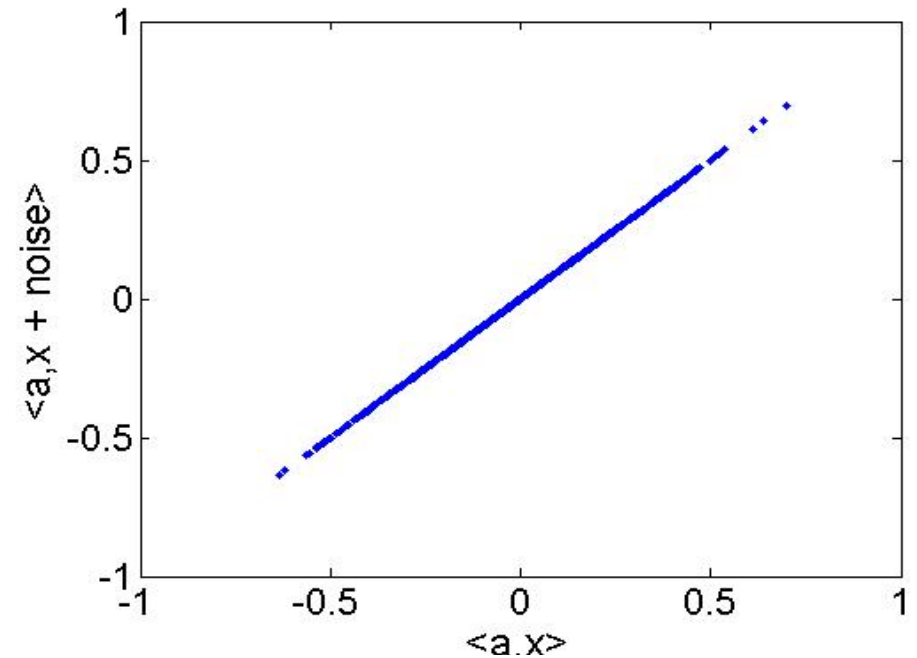


# Regularization (2)

Usual SIR



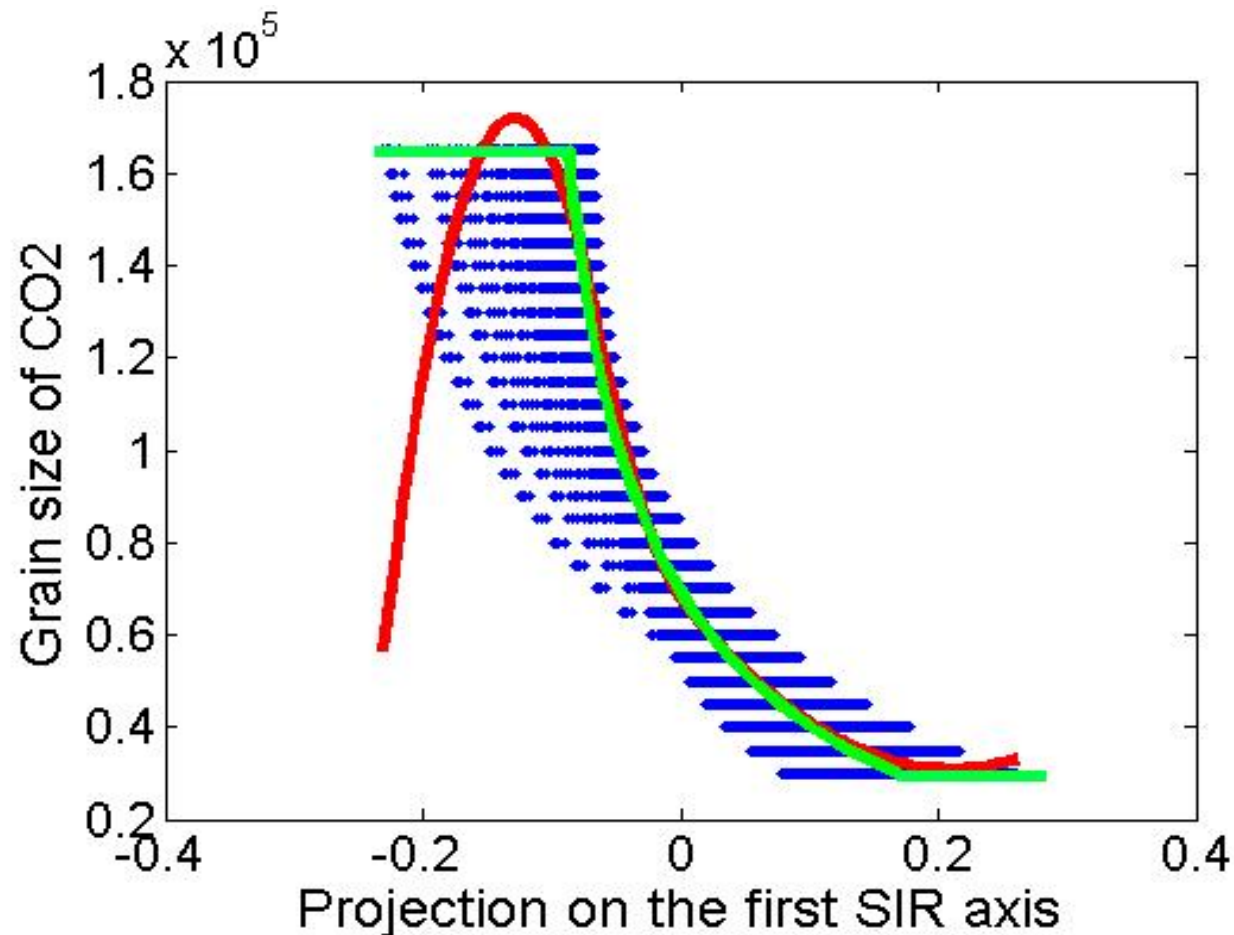
Regularized SIR (Tikhonov)



- *Depends on the regularization parameter  $\lambda$*
- *The condition number of the matrix decreases when  $\lambda$  increases*
- *The estimation bias increases when  $\lambda$  increases*

# Estimation

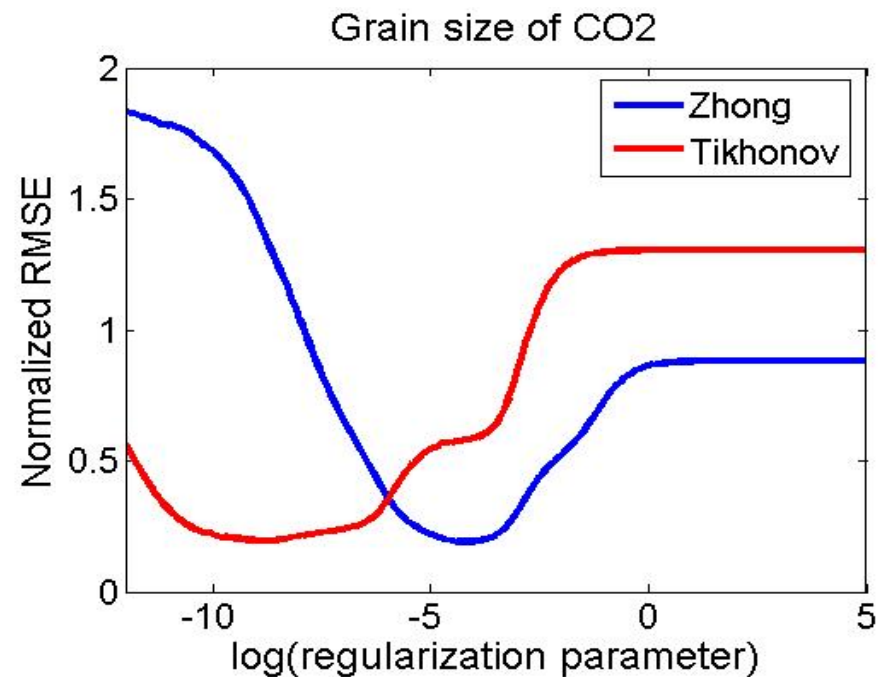
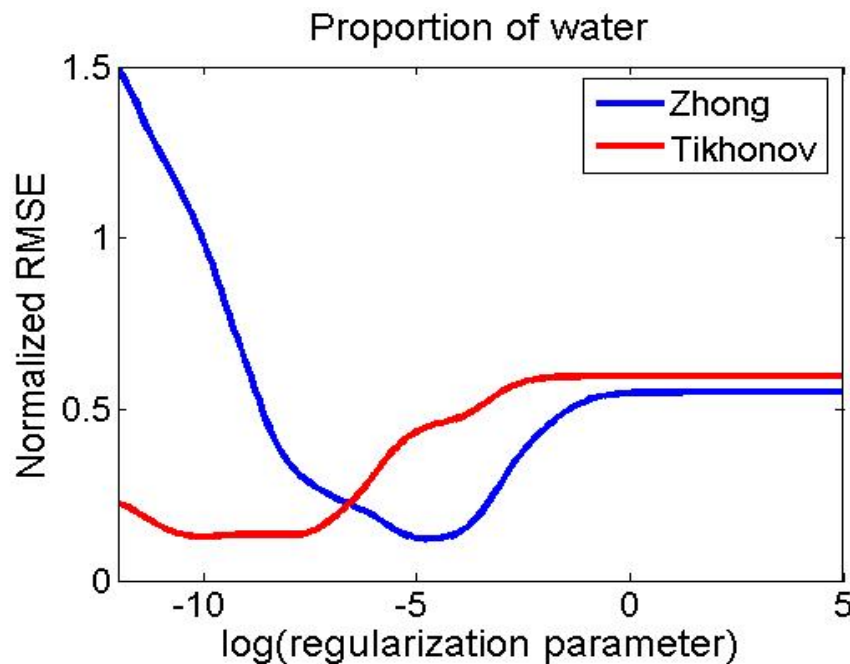
- Nearest neighbors (quite long!)
- Spline functions (choice of new parameters, boundaries)
- **Linear interpolation**



# Choice of the regularization parameter

- By minimization of “Normalized RMSE” criterion

$$\frac{\|\hat{y} - y\|}{\|y - \bar{y}\|} = \frac{\text{Residuals sum of square}}{\text{Total sum of square}}$$



# Outline

## I. Context

- Hyperspectral image data
- Inverse problem

## II. Dimension reduction

- PCA
- SIR

## III. Regularization and estimation

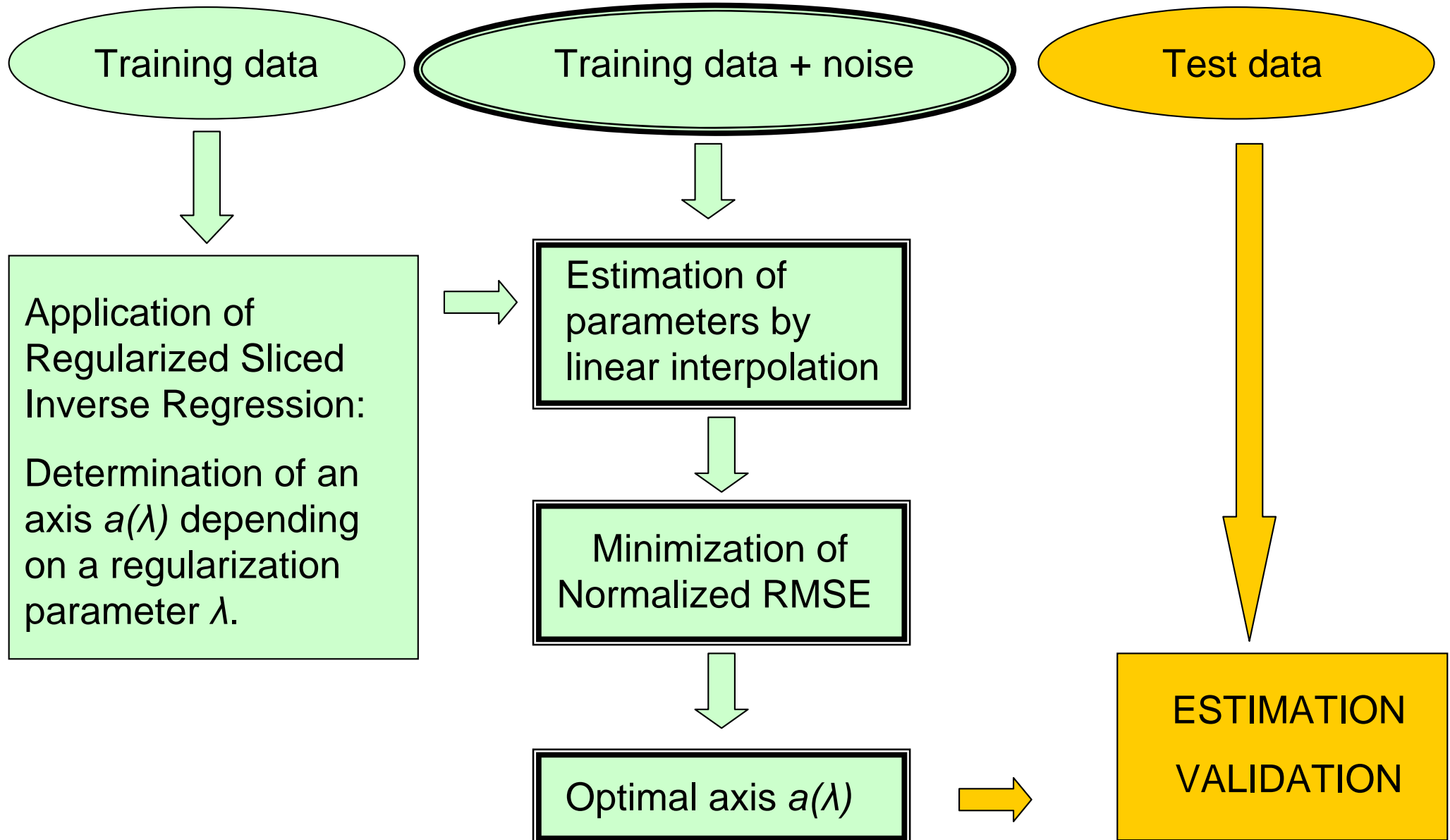
- Zhong et al., 2005
- Tikhonov

## IV. Validation on simulations

## V. Application to the south polar cap of Mars

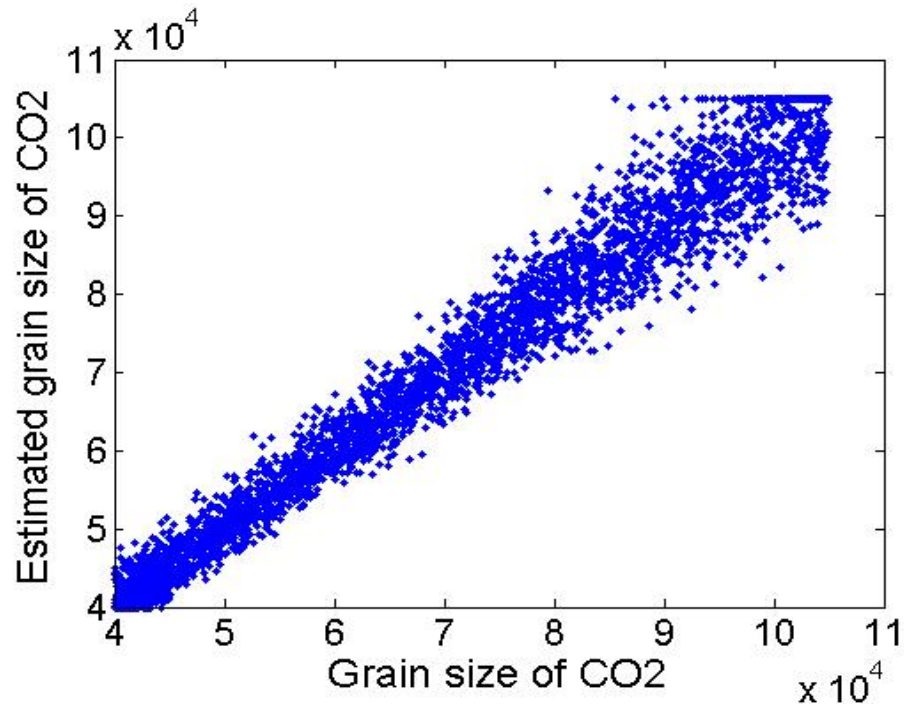
## VI. Conclusion and future work

# Validation (1)

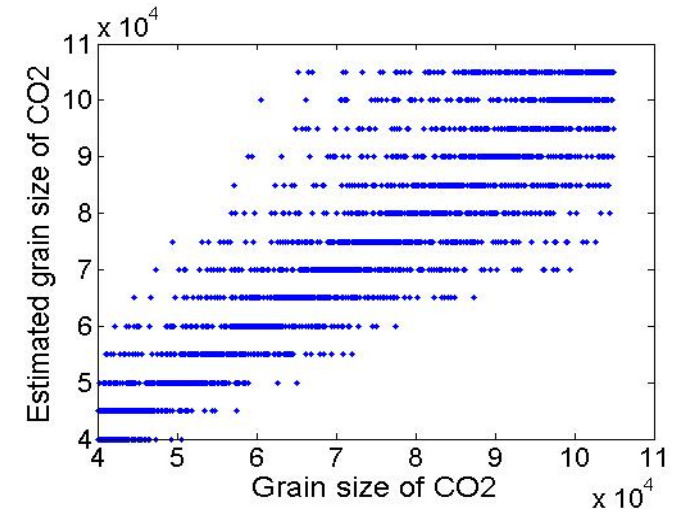


# Validation (2)

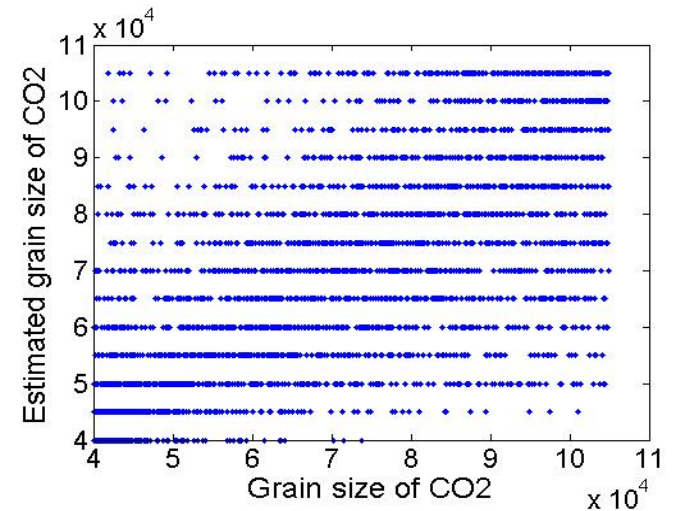
Regularized Sliced inverse regression (Tikhonov)



Nearest neighbors



Weighted nearest neighbors



# Validation (3)

**Normalized RMSE criterion:**

$$\frac{\|\hat{y} - y\|}{\|y - \bar{y}\|} = \frac{\text{Residuals sum of square}}{\text{Total sum of square}}$$

**Better when close to 0**

**SIR criterion:**

$$\frac{{}^t a \Gamma a}{{}^t a \Sigma a} = \frac{\text{between-slice variance}}{\text{total variance}}$$

**Better when close to 1**

Parameter	Variation interval	Tikhonov		Zhong		Nearest neighbor	Weighted nearest neighbor
		$\frac{\ \hat{y} - y\ }{\ y - \bar{y}\ }$	$\frac{{}^t a \Gamma a}{{}^t a \Sigma a}$	$\frac{\ \hat{y} - y\ }{\ y - \bar{y}\ }$	$\frac{{}^t a \Gamma a}{{}^t a \Sigma a}$	$\frac{\ \hat{y} - y\ }{\ y - \bar{y}\ }$	$\frac{\ \hat{y} - y\ }{\ y - \bar{y}\ }$
Proportion of dust	[0.0006 0.002]	0.33	0.92	0.33	0.92	0.56	0.53
Proportion of CO2	[0.9960 0.9988]	0.27	0.96	0.23	0.94	0.56	0.54
Proportion of water	[0.0006 0.002]	0.13	1.00	0.12	1.00	0.27	0.28
Grain size of water	[100 400]	0.37	0.92	0.38	0.87	0.40	0.68
Grain size of CO2	[40000 105000]	0.19	0.99	0.18	0.98	0.38	0.82

- SIR gives better results than nearest neighbor classification
- Tikhonov and Zhong regularizations are equivalent
- With Tikhonov regularization, minimal normalized RMSE is reached on a larger interval than with Zhong's.

# Outline

## I. Context

- Hyperspectral image data
- Inverse problem

## II. Dimension reduction

- PCA
- SIR

## III. Regularization and estimation

- Zhong et al., 2005
- Tikhonov

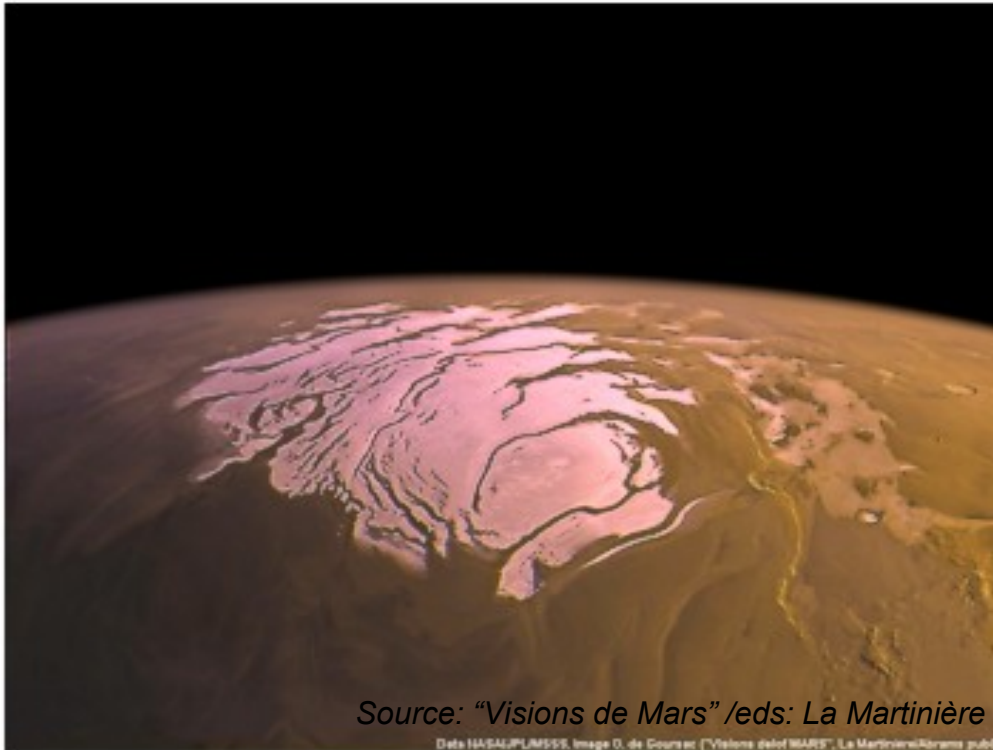
## IV. Validation on simulations

## V. Application to the south polar cap of Mars

## VI. Conclusion and future work



# Application to south polar cap of Mars



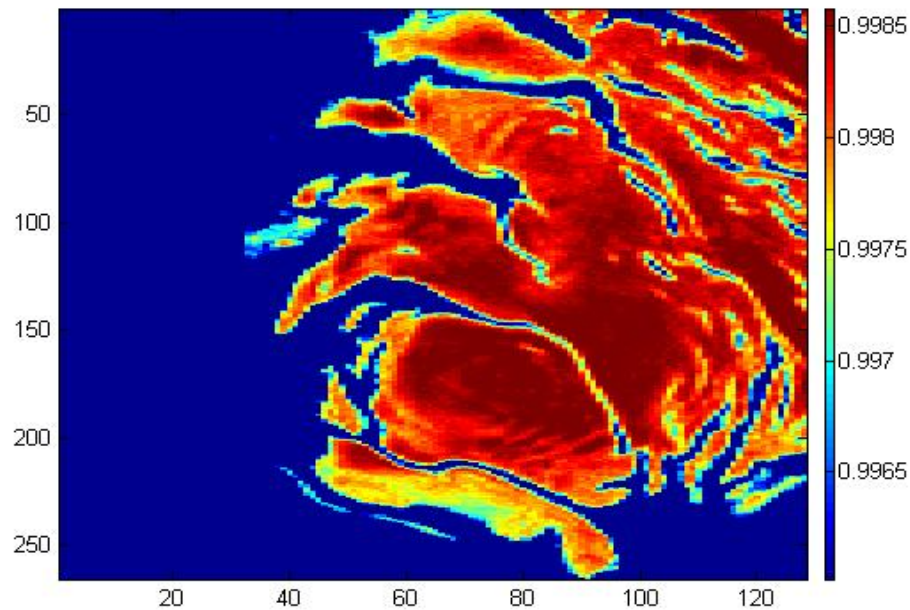
Source: "Visions de Mars" /eds: La Martinière

Data HASA/PLM555, Image 0, de Cours en "Visions de Mars", La Martinière/Éditions publi

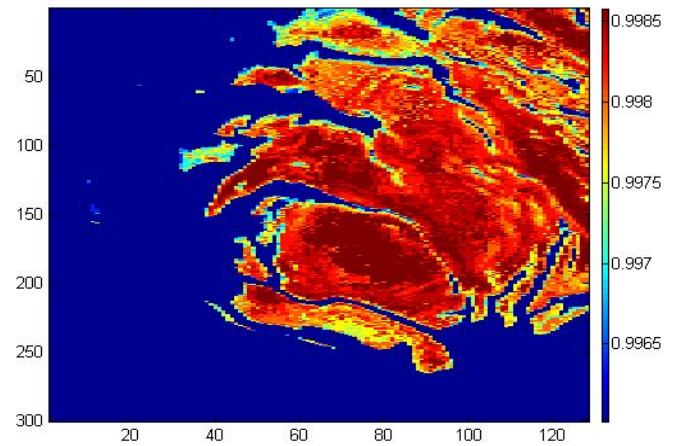
- Model determined by physicists (water + CO<sub>2</sub> + dust)
- 17753 spectra
- 184 wavelengths
- Training data simulated by radiative transfer model
- 5 parameters to study : proportions of water, dust and CO<sub>2</sub>, grain sizes of CO<sub>2</sub> and water.

# Proportion of CO2

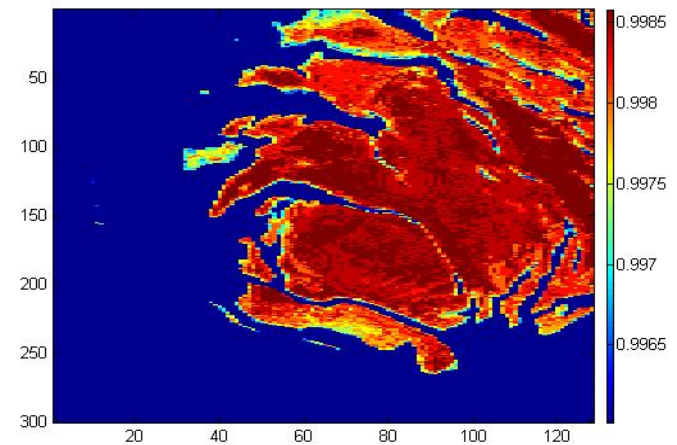
Regularized Sliced Inverse Regression (Tikhonov)



Nearest neighbors

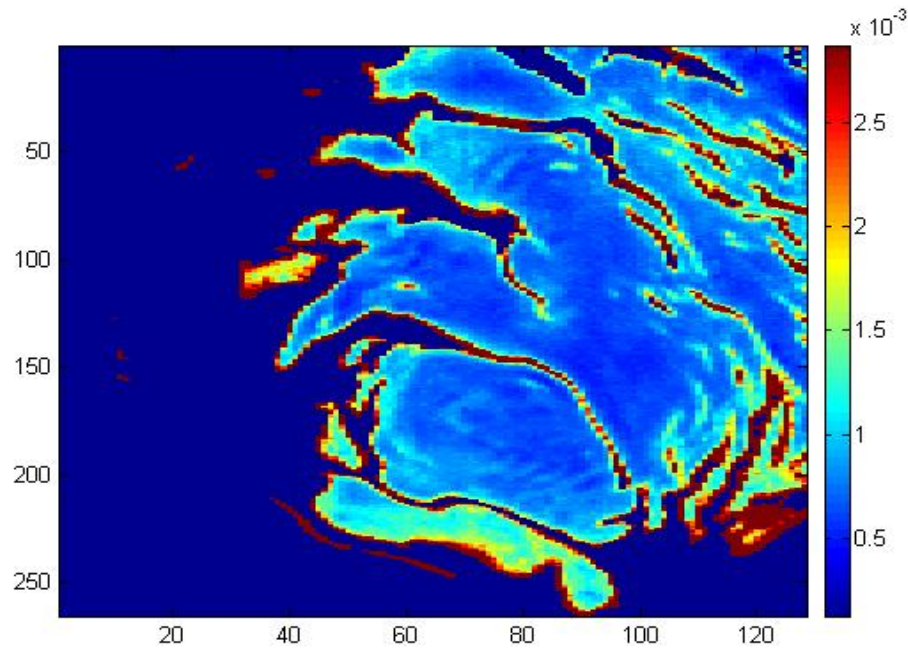


Weighted nearest neighbors

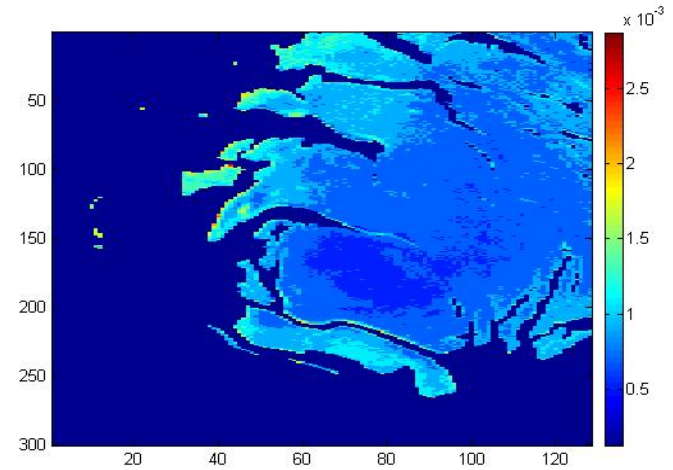


# Proportion of water

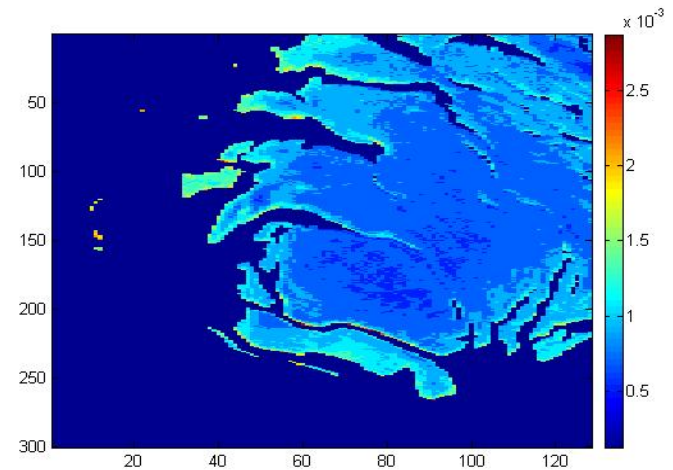
Regularized Sliced Inverse Regression (Tikhonov)



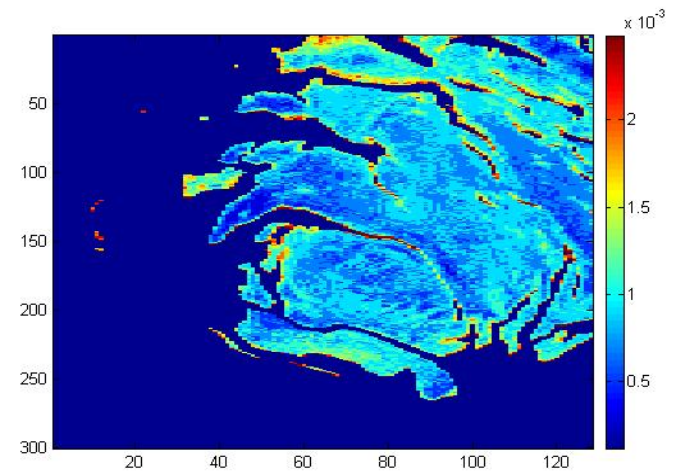
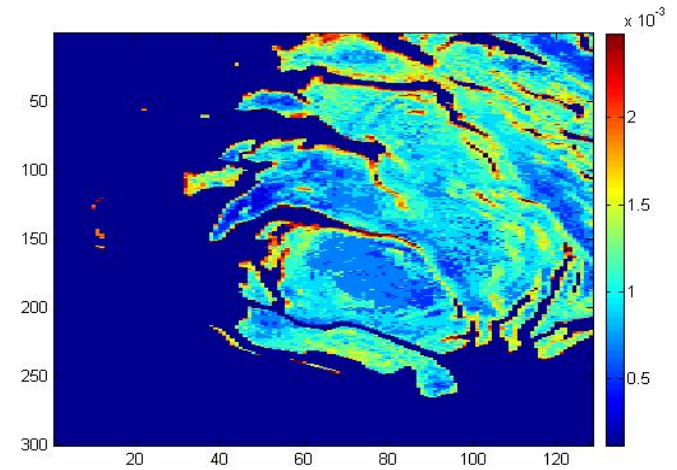
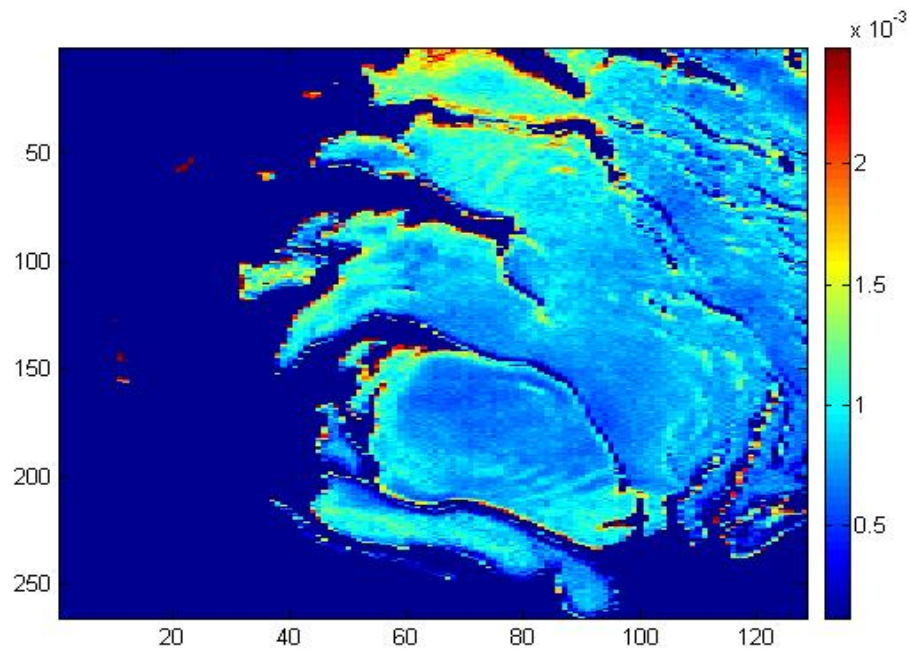
Nearest neighbors



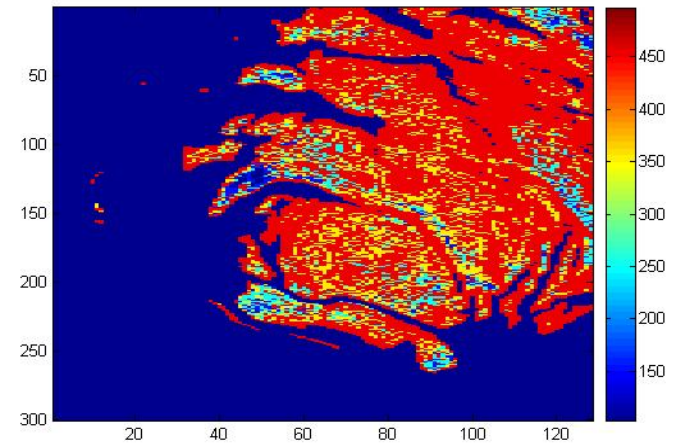
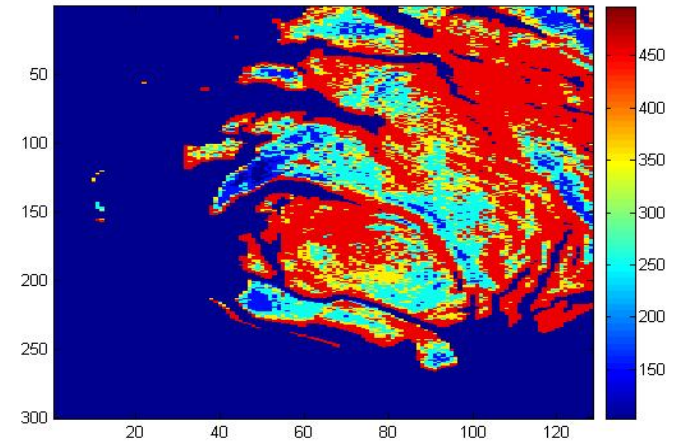
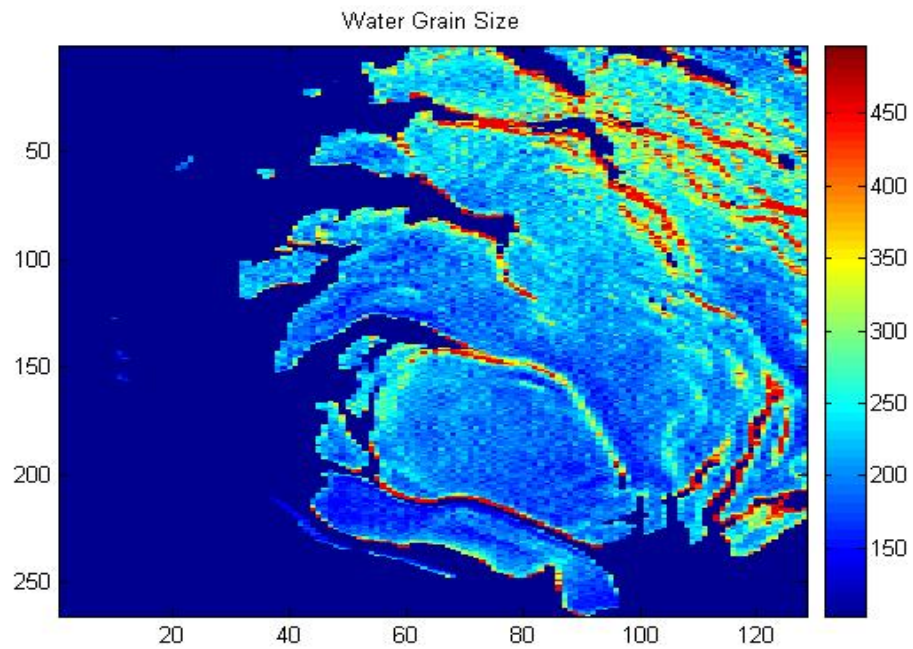
Weighted nearest neighbors



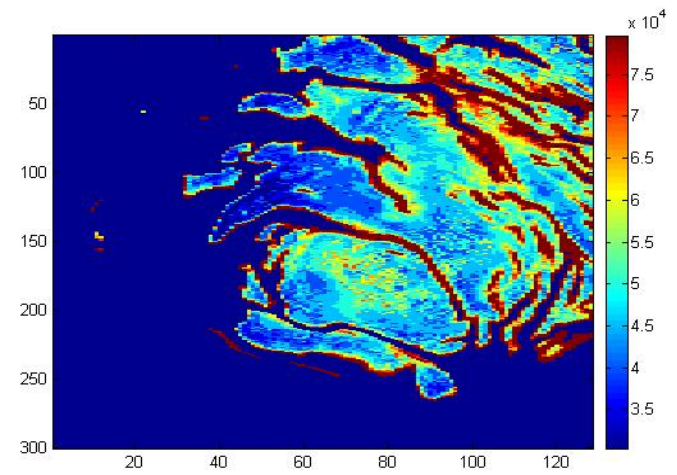
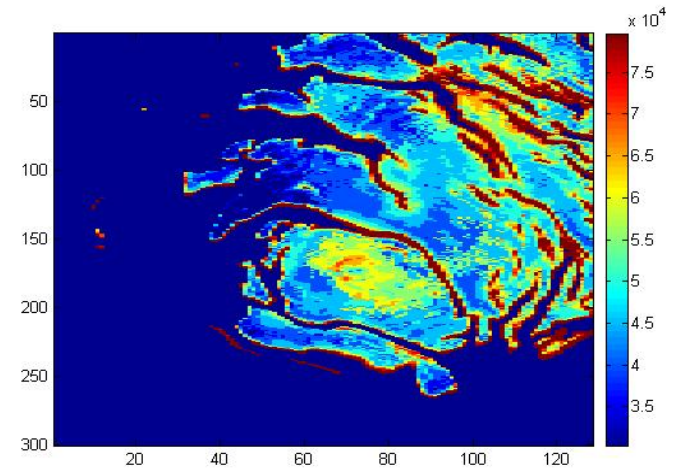
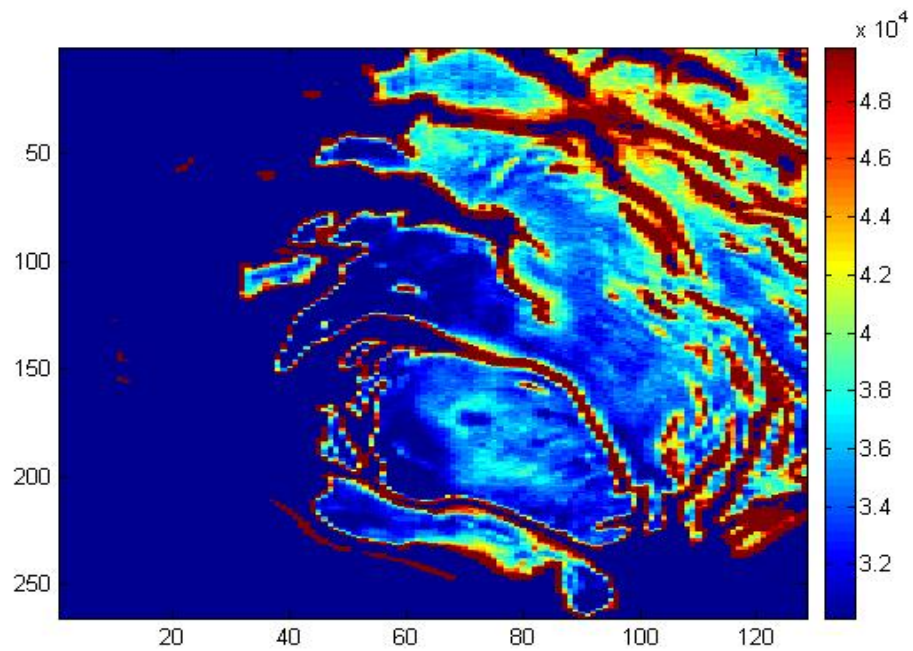
# Proportion of Dust



# Grain size of water



# Grain size of CO2



# Outline

## I. Context

- Hyperspectral image data
- Inverse problem

## II. Dimension reduction

- PCA
- SIR

## III. Regularization and estimation

- Zhong et al., 2005
- Tikhonov

## IV. Validation on simulations

## V. Application to the south polar cap of Mars

## VI. Conclusion and future work

# Conclusion and future work

- Good results on simulations
- Realistic results on real data
- Validation is difficult because of the lack of ground measurements
- Choice of the regularization parameter?
- Uncertainties?
- Comparisons to other methods