

# LOCUS: Local Cooperative Unified Segmentation of MRI Brain Scans

-, -, -, -  
1 -  
2 -  
3 -

**Abstract.** We propose to carry out cooperatively both tissue and structure segmentations by distributing a set of *local* and *cooperative* models in a unified MRF framework. Tissue segmentation is performed by partitioning the volume into subvolumes where local MRFs are estimated in cooperation with their neighbors to ensure consistency. Local estimation fits precisely to the local intensity distribution and thus handles nonuniformity of intensity without any bias field modelization. Structure segmentation is performed via local MRFs that integrate localization constraints provided by *a priori* general fuzzy description of brain anatomy. Structure segmentation is not reduced to a postprocessing step but cooperates with tissue segmentation to gradually and conjointly improve models accuracy. The evaluation was performed using phantoms and real 3T brain scans. It shows good results and in particular robustness to nonuniformity and noise with a low computational cost.

## 1 Introduction

MRI brain scan segmentation is a challenging task and has been widely addressed in the last 15 years. Difficulties in automatic segmentation arise from various sources including the size of the data, the low contrast between tissues, the limitations of available *a priori* knowledge, local perturbations such as noise or global perturbations such as intensity nonuniformity. Current approaches share three main characteristics: first, tissue and structure segmentations are considered as two separate tasks whereas they are clearly linked. Second, for a robust to noise segmentation, the Markov Random Field (MRF) probabilistic framework is classically used to introduce spatial dependencies between voxels [1, 2]. Third, tissue models are generally estimated globally through the entire volume and do not reflect spatial intensity variations within each tissue. It requires the introduction of an explicit so called “bias field” model to account for intensity nonuniformity. Local segmentation is an attractive alternative. The principle is to compute models in various subvolumes to fit better to local image properties. However, the few local approaches proposed to date are clearly limited: either they use local estimation as a preprocessing step only to estimate a bias field model [3], or they use redundant information to ensure consistency and smoothness between local estimated models [4, 5], greedily increasing computational

cost. We present in this paper an original Local Cooperative Unified Segmentation (LOCUS) approach which 1) performs tissue and structure segmentation by distributing a set of cooperating local MRF models through the volume, 2) segments structures by introducing prior localization constraints in a MRF framework and 3) ensures local models consistency and tractable computational time via specific cooperation and coordination mechanisms.

## 2 Method

### 2.1 MRF Segmentation

We consider a finite set of  $N$  voxels  $V = \{1, \dots, N\}$  on a regular 3-D grid. Our aim is to assign each voxel  $i$  to one of  $K$  classes considering the observed greylevel intensity  $y_i$  at voxel  $i$ . Both observed intensities and unknown classes are considered to be random fields denoted respectively by  $\mathbf{Y} = \{Y_1, \dots, Y_N\}$  and  $\mathbf{Z} = \{Z_1, \dots, Z_N\}$ . Each random variable  $Z_i$  takes its value in  $\{e_1, \dots, e_K\}$  where  $e_k$  is a  $K$ -dimensional binary vector corresponding to class  $k$ . Only the  $k^{th}$  component of this vector is non zero and is set to 1. In a traditional Markov model based segmentation framework, it is assumed that the conditional field  $\mathbf{Z}$  given  $\mathbf{Y} = \mathbf{y}$  is a Markov random field, *ie.*  $p(\mathbf{z} | \mathbf{Y} = \mathbf{y}, \Phi) = W_{y, \Phi}^{-1} \exp(-H(\mathbf{z} | \mathbf{y}, \Phi))$ , where  $H(\mathbf{z} | \mathbf{y}, \Phi)$  is an energy function depending on some parameters  $\Phi = (\Phi_y, \Phi_z)$  and given by:

$$H(\mathbf{z} | \mathbf{y}, \Phi) = H(\mathbf{z} | \Phi_z) - \sum_{i \in V} \log p(y_i | z_i, \Phi_y). \quad (1)$$

This energy is a combination of two terms: the first term is a regularization term that accounts for spatial dependencies between voxels. Denoting by  $\mathcal{N}(i)$  the neighbors of voxel  $i$  and by  ${}^t z_i$  the transpose of vector  $z_i$ , we will consider a Potts model with external field:

$$H(\mathbf{z} | \Phi_z) = \sum_{i \in V} ({}^t z_i v_i - \frac{\beta}{2} \sum_{j \in \mathcal{N}(i)} {}^t z_i z_j). \quad (2)$$

The second summation in (2) tends to favor neighbors that are in the same class when  $\beta$  is positive. This  $\beta$  parameter accounts for the strength of spatial interaction. Other parameters are the  $v_i$ 's that are  $K$ -dimensional vectors defining the so-called external field. In this case  $\Phi_z = \{v_1, \dots, v_N, \beta\}$ . The  $v_i$ 's can be related to *a priori* weights accounting for the relative importance of the  $K$  classes at site  $i$ . The introduction of these extra parameters in the standard Potts model enables us to integrate *a priori* knowledge on classes. The second term in (1) is a data-driven term based on intensities. For MRI we generally consider Gaussian probability density functions for each  $k$ ,  $p(y_i | z_i = e_k, \Phi_y) = g_{\mu_k, \sigma_k}(y_i)$ , with  $\Phi_y = \{\mu_k, \sigma_k, k = 1 \dots K\}$ . Segmentation is then performed according to the Maximum A Posteriori principle (MAP) by maximizing over  $\mathbf{z}$  the probability  $p(\mathbf{z} | \mathbf{y}, \Phi)$ . This requires the evaluation of an intractable normalizing constant

$W_{\mathbf{y},\Phi}$  and the estimation of the unknown parameters  $\Phi$ . A standard approach is to use EM-based algorithms to globally estimate the parameters through the entire volume. We propose in the next subsection a Local and Cooperative version of EM (LOC-EM) for local segmentation approaches.

## 2.2 Local Cooperative Tissue Segmentation (LOCUS-T).

We partition the volume into a set of  $C$  non-overlapping local subvolumes  $V_c, c \in C$  and distribute one local MRF model  $M_c$  per subvolume. We consider  $K = 3$  tissue classes:  $CSF$  (Cephalo-Spinal Fluid),  $GM$  (Grey Matter) and  $WM$  (White Matter). The hidden tissue classes  $t_i$ 's take their values in  $\{e_1, e_2, e_3\}$  respectively for classes  $\{e_{CSF}, e_{GM}, e_{WM}\}$ . Each local MRF model  $M_c$  is defined by the Gibbs distribution of energy (see Section 2.1):

$$H^c(\mathbf{t} | \mathbf{y}, \Phi^c) = \sum_{i \in V_c} \left[ t_i \lambda_i^c - \frac{\beta^c}{2} \sum_{j \in \mathcal{N}(i)} t_i t_j - \log p(y_i | t_i, \Phi_y^c) \right], \quad (3)$$

where the parameters  $\Phi^c = \{\Phi_t^c, \Phi_y^c\}$  have to be estimated. However, the external field denoted by  $\{\lambda_1^c, \dots, \lambda_N^c\}$  is not estimated but used to incorporate information coming from structure segmentation to perform cooperation.  $\Phi_t^c$  reduces then to  $\{\beta^c\}$ , while  $\Phi_y^c$  are the estimated parameters of the local Gaussian tissue intensity models. The MRF model  $M_c$  introduces spatial dependencies between voxels in its subvolume  $V_c$ , providing *consistent neighboring labels*. Because the estimation is local, some tissue classes are likely to be under-represented in some subvolumes, leading to poor model estimations with a classical EM scheme. We propose a Local and Cooperative version of EM (LOC-EM) for spatially organized subvolumes to ensure a *global consistency of local models*. We denote by  $\mathcal{N}(M_c)$  the set of MRF models neighbouring  $M_c$  and introduce in EM a set of cooperation and coordination mechanisms as follows:

### Cooperation between $M_c$ and $\mathcal{N}(M_c)$ .

- *Model Checking:* we compute for each  $M_c$  a model  $\widetilde{M}_c$  averaging the models of  $\mathcal{N}(M_c)$ . Then, for each class  $k$ , we compute the KullBack-Leibler distance  $\mathcal{D}_k^c$  between intensity models of  $M_c$  and  $\widetilde{M}_c$ .

- *Model Correction:* if  $\mathcal{D}_k^c$  is larger than a given threshold, we compute the corrected mean and variance of class  $k$  from a linear combination of intensity models in  $M_c$  and  $\widetilde{M}_c$  using  $\mathcal{D}_k^c$  to determine the linear coefficients.

- *Model Interpolation:* from local estimations in neighbouring subvolumes we get then one intensity model per voxel by using cubic splines interpolation between corrected models of  $M_c$  and of  $\mathcal{N}(M_c)$ . This results in a non-stationary field-like approach and has the advantage to ensure smooth model variation between neighboring subvolumes and to intrinsically handle nonuniformity of intensity inside each subvolume.

### Coordination between MRF models.

- *System starting:* each local EM enters in idle mode after its local initialization. A global intensity model is computed using the Fuzzy C-Mean algorithm and

then only the MRF models closest to the global model are activated.

- *Knowledge spreading*: when the EM algorithm for  $M_c$  is stabilized, its neighbors are activated to perform estimation in turn. For already stabilized EM, model checking is performed. If it results in model correction and model interpolation, the corresponding EM are restarted to take into account the updated models modifications.

### 2.3 Cooperative Tissue and Structure Segmentation (LOCUS-TS).

We extend the approach above to segment both tissues and structures. We currently consider  $L = 9$  subcortical structures: the ventricular system, the Frontal Horns, the Caudate Nuclei, the Thalamus, and the Putamens. For each target structure  $l$  we define a local Markov model  $M_l$  that labels voxels of its subvolume  $V_l$  in  $K = 2$  classes referred to as *structure* and *background*. Denoting by  $\mathbf{s} = \{s_i, i \in V_l\}$  the hidden classes, the energy function of  $M_l$  is given by:

$$H^l(\mathbf{s} | \mathbf{y}, \Psi^l) = \sum_{i \in V_l} \left[ t_{s_i} \alpha_i^l - \frac{\beta^l}{2} \sum_{j \in \mathcal{N}(i)} t_{s_i} s_j - \log p(y_i | s_i, \Psi_{y,i}^l) \right], \quad (4)$$

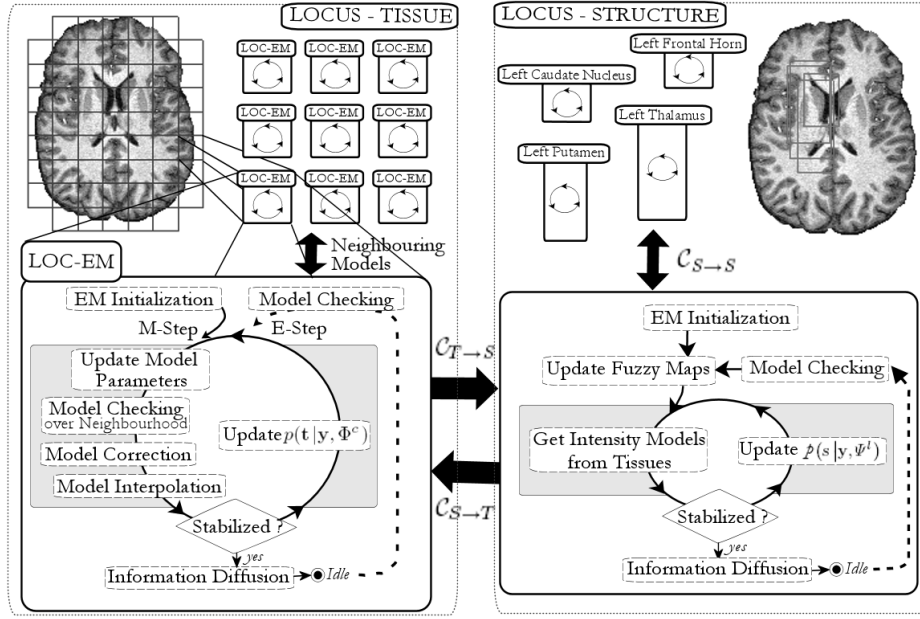
with  $\Psi^l = \{\beta^l, \alpha_i^l, \Psi_{y,i}^l, i \in V_l\}$  and  $s_i \in \{e_1, e_2\} = \{e_B, e_S\}$  for a voxel of the background or a voxel belonging to structure  $l$ .

#### Integration of prior localization constraints in the MRF.

Automatic structure segmentation cannot rely only on radiometry information because intensity distributions of grey nuclei are largely overlapping. A *priori* knowledge should be introduced. A recent way to provide it is to describe brain anatomy with generic fuzzy spatial relations [6, 7]. Three kind of relations are generally considered: distance, symmetry and orientation relations. They are expressed as 3D fuzzy maps to take into account the generic nature of the provided knowledge. Each subcortical structure is described by a set of such generic fuzzy spatial relations provided by a brain anatomist. Fusion operators between fuzzy sets are then used to combine the knowledge provided by each spatial relation and provide a generic Fuzzy Localization Map (FLM) of the structure in the volume. The FLM  $f^l$  of structure  $l$  is used in two ways: first it dynamically provides the structure subvolume  $V_l$  containing the structure  $l$  by a simple thresholding. Second, it can be integrated as an *a priori* anatomical knowledge in the MRF framework via the external field  $\{\alpha_i, i \in V_l\}$ . We denote by  $f_i^l$  the value of  $f^l$  at voxel  $i$  and propose to introduce the prior fuzzy knowledge of the FLM as relative prior weights for each voxel  $i$ , by setting  $\alpha_i^l = {}^t[\alpha_i^l(e_B), \alpha_i^l(e_S)]$  to  $\alpha_i^l = \gamma {}^t[-\log(1 - f_i^l), -\log f_i^l]$ , where  $\gamma > 0$  adjusts the influence of the external field. When  $f_i^l \approx 0$ , voxel  $i$  is unlikely to belong to the structure. It follows  $\alpha_i^l(e_B) < \alpha_i^l(e_S)$  which favors in (4) the *background* class. When  $f_i^l \approx 1$ , voxel  $i$  is likely to belong to the structure. In that case  $\alpha_i^l(e_B) > \alpha_i^l(e_S)$  and the class *structure* is favored.

#### Cooperation and coordination mechanisms between MRF models.

Let  $\mathcal{C}_{T \rightarrow S}(l)$  (resp.  $\mathcal{C}_{S \rightarrow T}(c)$ ) denotes the tissue (resp. structure) subvolumes that



**Fig. 1.** Cooperative LOCUS-TS approach: for tissues (left), a LOC-EM cycle is distributed to each subvolume. For structures (right), each structure subvolume is associated to an EM cycle which cooperates with tissues.

overlap with the structure subvolume  $V_l$  (resp. tissue subvolume  $V_c$ ).  $C_{S \rightarrow S}(l)$  denotes structures using  $l$  as a reference in a spatial relation. MRF models cooperate to make the segmentations gradually more accurate as described below.

- *Updating structure models via tissue models:* each structure  $l$  being composed of a single tissue  $T^l \in \{e_{CSF}, e_{GM}, e_{WM}\}$ , we do not estimate intensity models of class *structure* and class *background*. We rather compute them from tissue intensity models by setting for  $i \in V_l$ :

$$\begin{cases} p(y_i | s_i = e_S, \Psi_{y,i}^l) = p(y_i | t_i = T^l, \Psi_{y,i}) \\ p(y_i | s_i = e_B, \Psi_{y,i}^l) = \max_{t \in \{e_{CSF}, e_{GM}, e_{WM}\}} p(y_i | t_i = t, \Psi_{y,i}) \end{cases},$$

so that improvements in tissue intensity models estimation are dynamically taken into account by structure models.

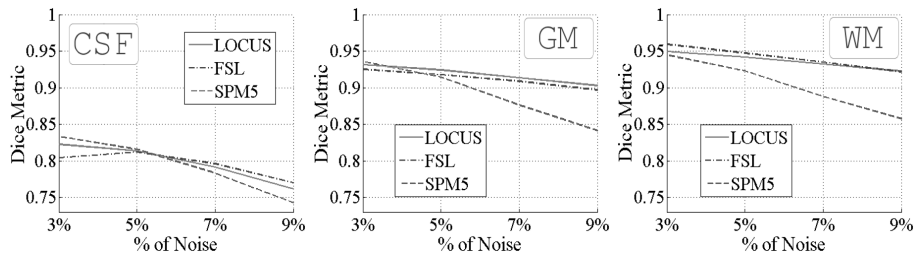
- *Feedback of Structure Segmentation on Tissue Segmentation:* conversely, results from structure models are integrated in the tissue model via the external field  $\lambda^c$  (see Eq. 3). We express it as the disjunctive fusion over  $l$  of posteriori probabilities  $p(\mathbf{s} | \mathbf{y}, \Psi^l)$  coming from structures  $l$  of  $C_{S \rightarrow T}(c)$ . It follows that structure segmentation is not reduced to a second step but is combined to tissue segmentation to improve their performances.

- *Updating Fuzzy Maps*: when the segmentation of structure  $l$  is updated the structure models of  $\mathcal{C}_{S \rightarrow S}(l)$  take it into account by re-computing their spatial relations with respect to  $l$ , making the knowledge gradually more accurate. A synthetic view of our approach is given in Fig 1.

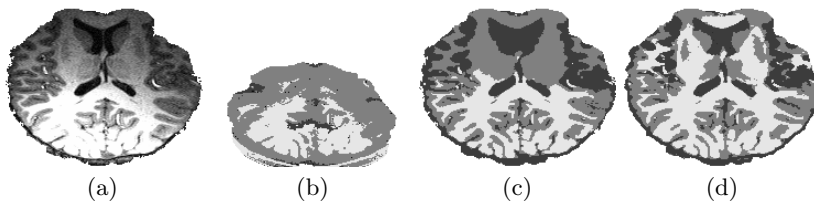
### 3 Results

The evaluation was performed using both phantoms and real 3T brain scans. We first quantitatively compared LOCUS-T to two well known approaches, FAST [2] of FSL and SPM5 [8], with the Dice similarity metric on the BrainWeb phantoms [9] with 40% of nonuniformity and different noise values (see Fig. 2). Fig. 3 shows a visual evaluation on a very high bias field real 3Tesla brain scan<sup>4</sup>. Next, we evaluated the cooperative tissue and structure segmentations. Three experts have manually segmented on BrainWeb the left caudate nucleus, the left putamen and the left thalamus, from which we computed a ground truth segmentation using STAPLE [10]. Fig. 4 illustrates the gradual improvements of tissue and structure segmentations provided by LOCUS-TS. At the first convergence (time  $t_0$ ) of EM, the Dice index is respectively 0.76, 0.77 and 0.72 for the caudate nucleus, the putamen and the thalamus. At the end, it reaches 0.76, 0.79 and 0.80. Fig. 5 shows qualitative evaluation of LOCUS-TS on a real 3T brain scan.

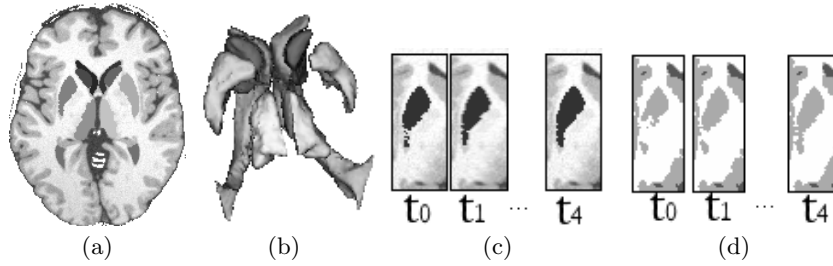
<sup>4</sup> This image was acquired with a surface coil which provides a high sensitivity in a small region (here the occipital lobe) for functional imaging applications.



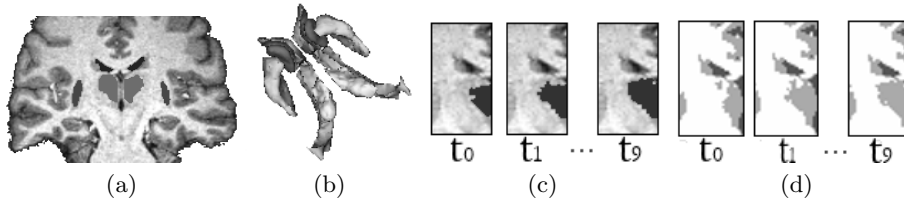
**Fig. 2.** Comparison of LOCUS-T, FSL and SPM5 on the BrainWeb phantoms.



**Fig. 3.** Tissue segmentations provided by SPM5 (b), FSL (c) and LOCUS-T (d).



**Fig. 4.** Segmentation by LOCUS-TS on BrainWeb(a), 3D structure reconstruction(b), gradual improvement of putamen segmentation(c) and corresponding tissue segmentation(d).



**Fig. 5.** Segmentation by LOCUS-TS on a real 3T image(a), 3D structure reconstruction(b), gradual improvement of thalamus segmentation(c) and tissue segmentation(d).

## 4 Discussion

Classical global approaches require to estimate an explicit bias field model to take into account the tissue intensity inhomogeneities [8, 11]. This model relies on the non realistic assumption of a single multiplicative bias field affecting all tissue classes equally. In contrast, the local estimation of MRF parameters in different subvolumes intrinsically handles tissue intensity inhomogeneities. Our approach, with specific cooperation mechanisms between local models, appears to be an elegant and time efficient way to ensure global consistency of local models for tissue segmentation. It shows a significantly higher robustness to noise when compared to SPM5 (see Fig. 2), and more generally comparable results for a reduced computing time, namely, approximately 4min for LOCUS-T and respectively 8min and 14min for FSL and SPM5 on a 4Ghz Pentium, 1Go RAM. It illustrates that easy-to-segment subvolumes converge quickly, allowing the system to focus on other areas. LOCUS-T appears to be robust to very high intensity inhomogeneities as well (see Fig. 3), while SPM5, which uses an a priori atlas, fails in the segmentation and FSL does not estimate a correct bias field. In addition, instead of considering structure segmentation as a postprocessing, we propose to combine tissue and structure segmentations in a cooperative way: tissue and structure models are mutually updated, making both models gradually more accurate and providing optimal results (see Fig. 4 and 5). Improvements

are particularly significant for structures such as thalamus or putamen for which contrast to noise ratio is low (see Dice index improvement in Section 3). As regards the additional use of a priori anatomical knowledge, standard structure segmentation approaches rely on global atlas and atlas warping methods which are very time consuming and limited due to inter-subject variability. We consider instead an *a priori* description of brain anatomy based on fuzzy spatial relations. This was introduced in [6] with a region-based approach, while it is used in [7] in a deformable model framework. However, the image preprocessing steps required to ensure the stabilization of the deformable model on the true frontiers of the objects make their approaches difficult to apply on high field images, with high intensity nonuniformity, or on non homogeneous structures such as putamen. Our solution consists in introducing fuzzy localization constraints as relative prior weights for each voxel in the MRF framework. It does not suffer from such difficulties as can be illustrated on structures such as putamen, and is still time efficient (10 to 15min). To conclude, the robustness and modularity of our LOCUS approach appear as interesting features when handling complex segmentation tasks. Efficiency is improved both in term of results quality and computing time.

## References

1. Van Leemput, K., Maes, F., Vandermeulen, D., Suetens, P.: Automated model-based tissue classification of MR images of the brain. *IEEE Trans. Med. Imag.* **18**(10) (1999) 897–908
2. Zhang, Y., Brady, M., Smith, S.: Segmentation of brain MR images through a hidden Markov random field model and the expectation-maximisation algorithm. *IEEE Trans. Med. Imag.* **20**(1) (2001) 45–47
3. Shattuck, D.W., Sandor-Leahy, S.R., Schaper, K.A., Rottenberg, D.A., Leahy, R.M.: Magnetic resonance image tissue classification using a partial volume model. *NeuroImage* **13**(5) (2001) 856–876
4. Rajapakse, J.C., Giedd, J.N., Rapoport, J.L.: Statistical approach to segmentation of single-channel cerebral MR images. *IEEE TMI* **16**(2) (1997) 176–186
5. Zhu, C., Jiang, T.: Multicontextual fuzzy clustering for separation of brain tissues in magnetic resonance images. *NeuroImage* **18**(3) (2003) 685–96
6. Barra, V., Boire, J.: Automatic segmentation of subcortical brain structures in MR images using information fusion. *IEEE Trans. Med. Imag.* **20**(7) (2001) 549–558
7. Colliot, O., Bloch, I., Camara, O.: Integration of fuzzy spatial relations in deformable models - Application to brain MRI segmentation. *Pattern Recognition* **39**(8) (2006) 1401–1414
8. Ashburner, J., Friston, K.: Unified segmentation. *NeuroImage* **26** (2005) 839–851
9. Collins, D., Zijdenbos, A., Kollokian, V., Sled, J., Kabani, N., Holmes, C., Evans, A.: Design and construction of a realistic digital brain phantom. *IEEE Trans. Med. Imag.* **17**(3) (1998) 463–468
10. Warfield, S., Zou, K., Wells, M.: Simultaneous truth and performance level estimation (STAPLE): An algorithm for the validation of image segmentation. *IEEE Trans. Med. Imag.* **23**(7) (2004) 903–921
11. Wells, W.M., Grimson, W.E.L., Kikinis, R., Jolesz, F.A.: Adaptive segmentation of MRI data. *IEEE Trans. Med. Imag.* **15**(4) (1996) 429–442